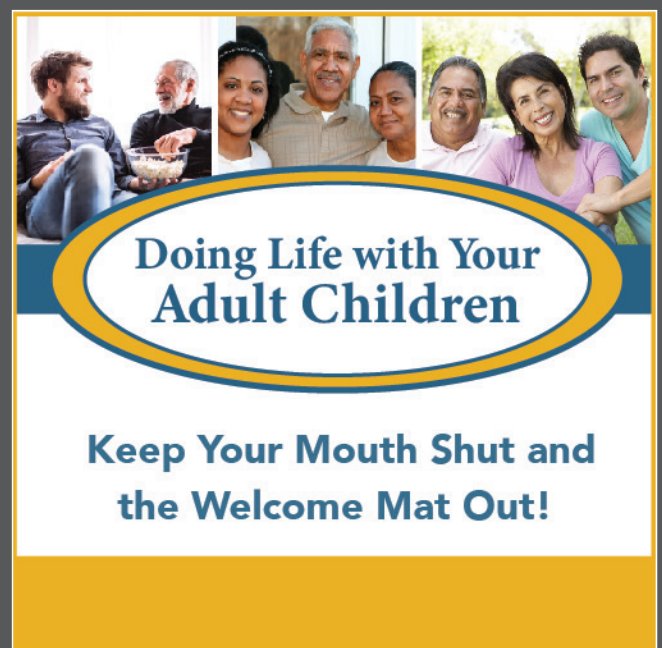
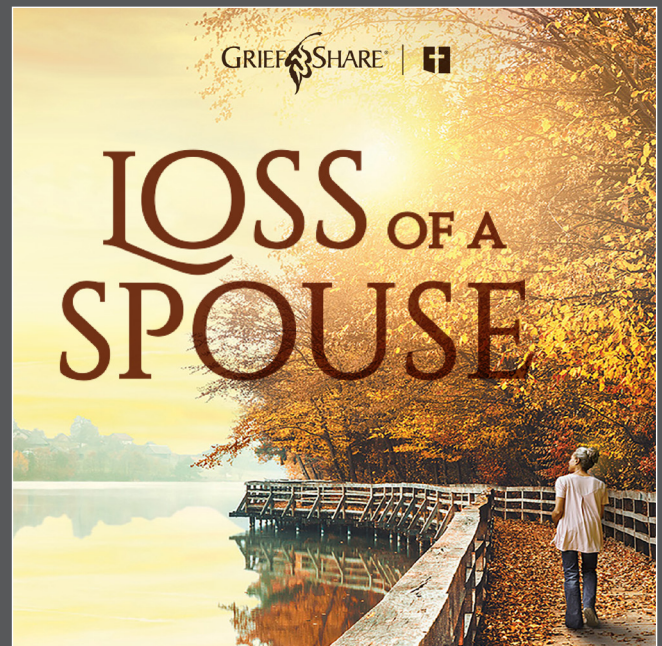


FEBRUARY 2023 AT GLENKIRK 

# JOURNEY

Experiences, Resources, and Classes to Help You Grow Closer to God



## CALENDAR

- Feb 2** 'Cooking with Emil'  
**Feb 5** New Adult Class Begins  
**Feb 5** 'The Game Plan' Gathering  
**Feb 6** 'Doing Life with Your Adult Children' Begins  
**Feb 10** 'Loss of a Spouse' Workshop  
**Feb 17-19** High School Winter Retreat  
**Feb 22** Ash Wednesday

## PRAYER & DEVOTIONALS

- Submit a prayer request or sign up for our prayer chain: [GlenkirkChurch.org/News](http://GlenkirkChurch.org/News)
- Download weekly devotional: [GlenkirkChurch.org/Devotions](http://GlenkirkChurch.org/Devotions)
- Join livestream and to view past sermons: [GlenkirkChurch.org/Sermons](http://GlenkirkChurch.org/Sermons)

## COMMUNION

We will be celebrating Communion on **February 5**. Email at [Info@GlenkirkChurch.org](mailto:Info@GlenkirkChurch.org) if you have any questions.

## ALL CHURCH

### Epiphany Sermon Series | 'Welcome to the Table' | Through February 19

What does it mean to be hospitable to others? We need look no further than Jesus himself. Jesus embodied God's hospitality, welcoming people on the outside to experience a relationship with him and become part of his community. Join us for this seven-week series from Luke, as we experience Jesus' invitation to hospitality.

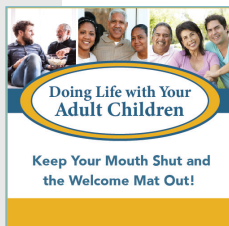
### Ash Wednesday | February 22

Patterned after the Old Testament Day of Atonement, Ash Wednesday is an opportunity for us to remember our humanity, repent of our sins, and prepare our hearts for the season of Lent. Pastors will administer ashes to go for those wishing to receive the imposition of ashes earlier in the day at the Glenkirk parking lot roundabout from 8:00am - 9:00am and 12:00pm - 1:00pm. Our evening service begins at 6:30 pm.

### Weekend Playlist | Available Online

Looking for some great worship music for your week? Check out our Weekend Playlist, available on Spotify ([GlenkirkWorship](http://GlenkirkWorship)) and at [GlenkirkChurch.org/Music](http://GlenkirkChurch.org/Music).

## YOUNG ADULT MINISTRIES



### 'Doing Life with Your Adult Children' | 5:45pm | Event Center | Starting February 6

Our first meeting will include a dinner prior to hearing Dr. Burns in person to kick off the study! All are welcome to join for the first week, regardless of attendance for the following 6 weeks. Weeks 2-7 will start at 6:30pm. Sign up at [GlenkirkChurch.org/News](http://GlenkirkChurch.org/News).

### Glenkirk Young Adults | Tuesdays | 7:30pm - 9:00pm | Gathering Place

If you are between the ages of 18 and 26(ish), join us weekly for food, fellowship, and Bible Study. Free lunch on the 1st Sunday of the month after the 10:45am service. Contact [JLinden@GlenkirkChurch.org](mailto:JLinden@GlenkirkChurch.org) for more information.

## ADULT MINISTRIES

### Adult Class | 'Intellectual Hospitality' | February 5, 12, & 19 | Room 22 | 10:45am

Can we agree to disagree? Can we vote differently and still get along? Can we hold diametrically opposed views on life's most essential questions and still honor one another? This 3 week series, taught by Dr. Diana Glycer, explores how we can extend God's hospitality and love to those we disagree with.

### Senior Fellowship | Every 2nd Thursday | 1:00pm - 4:00pm | Fellowship Hall

Glenkirk is hosting a senior fellowship with games and light refreshments. All are welcome, regardless of age.

### Stretch & Balance Class | Fellowship Hall | Tuesdays (11:30am) & Thursdays (9:00am)

For Adults 60+. Safe & light exercises led by a certified health instructor at no charge. For more info, contact [Info@GlenkirkChurch.org](mailto:Info@GlenkirkChurch.org).

### Threads of Joy | Thursdays | 9:00am - 12:00pm | Room 22

If you love to craft, sew, or knit, join us as we make items that bring comfort to those who are facing medical challenges. Email [Info@GlenkirkChurch.org](mailto:Info@GlenkirkChurch.org) for info.

### Small Groups

Interested in facilitating a small group or interested in joining one? Email Jenn at [JDegraw@GlenkirkChurch.org](mailto:JDegraw@GlenkirkChurch.org).

## MEN'S MINISTRIES

(Darren Richer)



**'The Game Plan'** | February 5 |  
5:00pm – 7:30pm

Join us as we enjoy a meal together, worship with other churches, and hear from Coba Canales, Dean of Spiritual Life at Azusa Pacific University. Sign-up at [GlenkirkChurch.org/Men](http://GlenkirkChurch.org/Men).

---

### Men's Small Groups | Meeting Virtually

Meet on various days and times in the morning and evening. To find a group that fits you and your schedule, please email [Men@GlenkirkChurch.org](mailto:Men@GlenkirkChurch.org).

---

## WOMEN'S MINISTRIES

(Caitlyn Schan)



**Women's Event | 'Cooking with our own Chef Emil Amato'** | February 2 |  
6:30pm | Fellowship Hall

Learn to make a simple Valentine's meal and different tablescapes for the holiday. Cost is \$20 and a light dinner will be served. Sign up online at [GlenkirkChurch.org/Women](http://GlenkirkChurch.org/Women).

---

### Women's Bible Study | Wednesdays | 9:30am

This Spring, WBS will study the book of Romans! We'll use Tim Keller's study guide to look at topics such as justification, righteousness, life in the Spirit, and more.

**Glenkirk Moms** | Every other Friday at 9:30am,  
Every 2nd Thursday at 6:30pm

This Spring our moms will explore topics including: spiritual disciplines for your children, praying for your children, how to have hard conversations, and more.

---

## ENGAGE - STUDENTS

(Josh Linden)

Follow us on Instagram! [@GlenkirkStudents](https://www.instagram.com/GlenkirkStudents)

**High School Winter Retreat** | February 17 – 19 |  
Green Valley, CA

Join us as we gather together in community to reset in God's creation. Trip cost is \$115. Register at [GlenkirkChurch.org/Camps](http://GlenkirkChurch.org/Camps). Email [SBrown@GlenkirkChurch.org](mailto:SBrown@GlenkirkChurch.org) with questions.

**High School Mission Trip** | June 18 – 24 |  
Salt Lake City, Utah

Join our team as we partner with MAVEN to grow in faith, understand how following Christ changes everything, and become courageous to share the good news. Register at [GlenkirkChurch.org/Students](http://GlenkirkChurch.org/Students), click on the Missions tab.

**ENGAGE Midweek** | 6:30pm & 7:00pm |  
Room 15 & Gathering Place

Join our Middle and High School students for study and fellowship Wednesday evenings. Middle school meets in Room 15 from 6:30-8:00pm and High School from 7:00-8:30pm in The Gathering Place.

---

## CHILDREN MINISTRIES

(Amber Flores)

Follow us on Instagram! [@GlenkirkKids](https://www.instagram.com/GlenkirkKids)

**AWANA Clubs** | Wednesdays | 6:30pm – 8:00pm

Children ages 3 years-5th grade are welcome to join us each week as we learn more about the Bible, how to show the love of Jesus to others, and have some fun! For more info, contact [AFlores@GlenkirkChurch.org](mailto:AFlores@GlenkirkChurch.org).

**KidMin Choir** | Sundays | 10:10am – 10:40am |  
Room 9 | Resumes February 12

Rehearsals start soon for our Palm Sunday performance! Register at [GlenkirkChurch.org/Elementary](http://GlenkirkChurch.org/Elementary) (click on the Sunday tab).

**Sunday School – 9:00am & 10:45am**

**KidMin (1st – 5th Grade)**

In-person Sunday School has reopened for grades 1st – 5th at both 9:00am and 10:45am! Email [AFlores@GlenkirkChurch.org](mailto:AFlores@GlenkirkChurch.org) for more info, or visit [GlenkirkChurch.org/Elementary](http://GlenkirkChurch.org/Elementary).

**Early Childhood (2 Years Old – Kindergarten)**

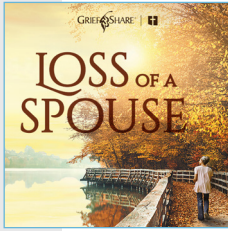
In-person Sunday School has reopened at both 9:00am and 10:45am! For more info, please email [EBraun@GlenkirkChurch.org](mailto:EBraun@GlenkirkChurch.org).

**Nursery (Newborns and Toddlers)**

Our loving volunteers are ready to care for your little ones while you attend Sunday services or classes. In the event that a parent is needed, the parent's cell phone will receive a text message.



## CARE & SUPPORT MINISTRIES (Jenn DeGraw)



**'Loss of a Spouse' Workshop |**  
February 10 | Friday |  
10:00am | Room 22

This GriefShare class explores the journey of and practical methods for processing grief. We pray that you will come away from this class with helpful coping tools and hope for

the future. Cost for the book is \$5. Sign up at [GlenkirkChurch.org/News](http://GlenkirkChurch.org/News).

### Lay Counseling

Counseling is available when life gets tough or in times of crisis. Premarital counseling is also available. For info, please contact [LayCounseling@GlenkirkChurch.org](mailto:LayCounseling@GlenkirkChurch.org).

### Meal Ministry

We have an ongoing ministry in which we provide meals for those who have a need due to illness or a new baby. Please contact Jenn at [JDegraw@GlenkirkChurch.org](mailto:JDegraw@GlenkirkChurch.org).

### Glenkirk Cares

If you could help with transportation or meals for an individual with cancer or the family of an individual with cancer, contact Jenn at [JDegraw@GlenkirkChurch.org](mailto:JDegraw@GlenkirkChurch.org). Glenkirk Cares seeks to help the patient and family while providing support and sharing the gospel.

### Deacons

Deacons are available to help with financial assistance or meals during a time of illness or hospitalization. Please contact Jenn at [JDegraw@GlenkirkChurch.org](mailto:JDegraw@GlenkirkChurch.org).

### Compassionate Care

We seek to meet the physical, emotional, and mental needs of people as a way of sharing Christ's love. If you or someone you know is in need, please contact Andrea Messinger at [AMessinger@GlenkirkChurch.org](mailto:AMessinger@GlenkirkChurch.org).

### Living Stones | Meeting Virtually

For family and friends of gay individuals. For more info, please call Living Stones at 626-963-6683.

### Alcoholics Anonymous

Mondays | 7:30pm | Room 22  
Tuesdays & Fridays | 8:00pm | Room 22

### Ray of Sonshine (Chronic pain, illness)

Info: [djemiddleton-access@msn.com](mailto:djemiddleton-access@msn.com)

### Narcotics Anonymous

Thursdays | 7:00pm | Room 22

## Parkinson's Caregiver Support Group | 2nd Monday of the Month | 9:00am

This group provides support, fellowship, and care for those caring for a loved one with Parkinson's disease. Email [Kjohnson547@yahoo.com](mailto:Kjohnson547@yahoo.com) for more information.

## CONNECTIONS (Jenn DeGraw)

**Want to find an area to volunteer?** Stop by the Connection Center following the services and talk with our connection team.

## FINANCIAL NEED

### Financial Information Available Online

We thank you for your continued financial support during these turbulent financial times. For a detailed look at our financials, visit [GlenkirkChurch.org/Give](http://GlenkirkChurch.org/Give).

## CONTACTS

### Tim Peck

Senior Pastor  
[TPeck@GlenkirkChurch.org](mailto:TPeck@GlenkirkChurch.org)

### Amber Flores

Director of Children's Ministries  
[AFlores@GlenkirkChurch.org](mailto:AFlores@GlenkirkChurch.org)

### Kate Nunneley

Associate Pastor  
[KNunneley@GlenkirkChurch.org](mailto:KNunneley@GlenkirkChurch.org)

### Andrea Messinger

Compassionate Care  
[AMessinger@GlenkirkChurch.org](mailto:AMessinger@GlenkirkChurch.org)

### Christine Boling

Business Manager & HR  
[CBoling@GlenkirkChurch.org](mailto:CBoling@GlenkirkChurch.org)

### Jackie Kniep

Website, App &  
Social Media Coordinator  
[JKnief@GlenkirkChurch.org](mailto:JKnief@GlenkirkChurch.org)

### Jenn DeGraw

Guest Relations Manager  
[JDegraw@GlenkirkChurch.org](mailto:JDegraw@GlenkirkChurch.org)

### Johanna Heller

Administrative Assistant  
(Children, Students, & Worship)  
[JHeller@GlenkirkChurch.org](mailto:JHeller@GlenkirkChurch.org)

### Josh Linden

Director of Student Ministries  
[JLinden@GlenkirkChurch.org](mailto:JLinden@GlenkirkChurch.org)

### General Church Info

[Info@GlenkirkChurch.org](mailto:Info@GlenkirkChurch.org)

### OUR SUNDAY SERVICES:

[GlenkirkChurch.org/sermon](http://GlenkirkChurch.org/sermon)

9:00AM | INDOORS & ONLINE

10:45AM | INDOORS & ONLINE

Glenkirk Church | 1700 Palopinto Ave, Glendora, CA 91741

626.914.4833 | [GlenkirkChurch.org](http://GlenkirkChurch.org) | [Info@GlenkirkChurch.org](mailto:Info@GlenkirkChurch.org)

@GlenkirkChurch | Facebook.com/GlenkirkChurch

